

Memograph M RSG40

Advanced Graphic Data Manager

Memory



RSG40

Communication

Ethernet



USB



Web-Server function
OPC-Server (option)

PSTN-/GSM-Modem



Fieldbus up to 40 channels (option):

- Profibus DP slave
- Modbus RTU slave
- Modbus TCP/IP slave
- Modbus RTU master



Serial connection
RS232, RS485



ReadWin 2000
PC software

24 V Transmitter power
supply output;
max. 250 mA



100...230 V AC ($\pm 10\%$)
24 V (-10%; +15%) AC/DC



Power

Slots for external
SD-card and USB-stick



256 MB
Internal
memory

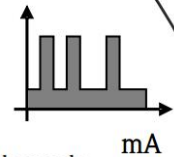


TFT 7"
Display

Inputs

0 to 20 analog inputs:

- TC
- RTD
- mA
- mV, V
- Frequency
- Pulse



Option:

- 8 mathematic channels
- Mathematic functions over
formula editor freely editable



6 to 14 digital inputs:

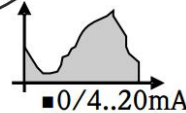
- Event
- Time
- Counter
- Control function

V



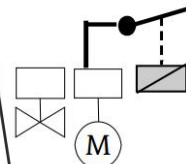
2 analog outputs (option):

- Current output or
- Frequency output



Relays:

- 1 change-over contact
- 5 to 11 normally open contacts



100 limit values
(variable channel mapping)

Outputs