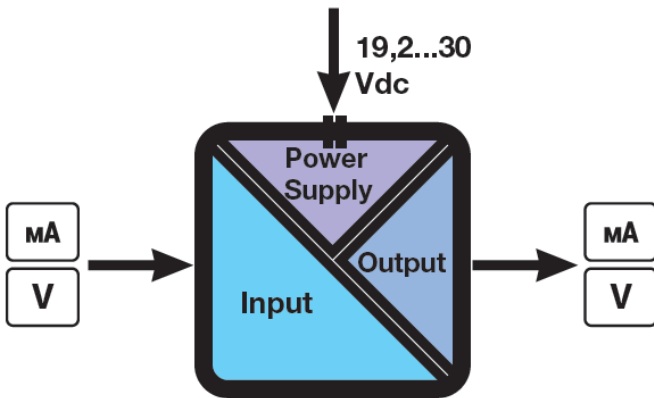


K109S

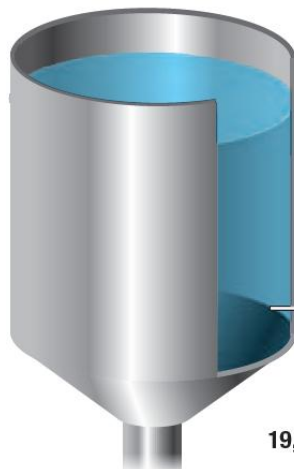
V/I Converter With Power For 2 Wires Transducers



- Power Supply: 19,2..30 Vdc
- Special functions: scale inversion, square root extraction, tanks linearization

- Input: - current 0/4..20 mA (loop power supply);
- voltage 0..10, 2..10, 0..5, 1..5 V
- Output: - current 0/4..20, 20..4/0 mA;
- voltage 0..5/10, 10..0, 1.5 Vdc

Accuracy
0,1%
IP20



Analog signal isolation, retransmission, visualization from 2-wire sensor

19,2..30 Vdc

